



## February 2022

Foxclone50 released. Foxclone50 This is a complete re-write of foxclone, primarily to improve maintainability of the code so basic functionality is unchanged. There are some minor cosmetic changes.

### Foxclone:

- Nearly all windows are now resizable. Note if you resize the progress window there is a three second delay before it catches up. Underneath partclone is running on a 3 second update cycle.
- You can change the text size – for those with poor eyesight, you will need to manually resize the windows to accommodate larger text.
- The default is now to select all partitions on a backup. If you want to deselect partitions you need to go to the settings tab and enable 'partition selection'. This to make it more difficult for newbies to make mistakes.
- Troubleshooting in the event of a problem is easier – enable debugging on the settings tab and it saves a file on the desktop – email it to [help@foxclone.com](mailto:help@foxclone.com).
- More error checking, particularly when backing up/restoring.

### In the iso:

- lightdm replaces slim as the display manager.
- Different theme.
- Connecting to wifi – it will prompt for your password (earlier versions of foxclone are clunky).
- Reverted to pcmanfm as the file manager replacing thunar (which had some issues).
- There is a utility to set the timezone if date/time is showing incorrectly (an issue for some users).

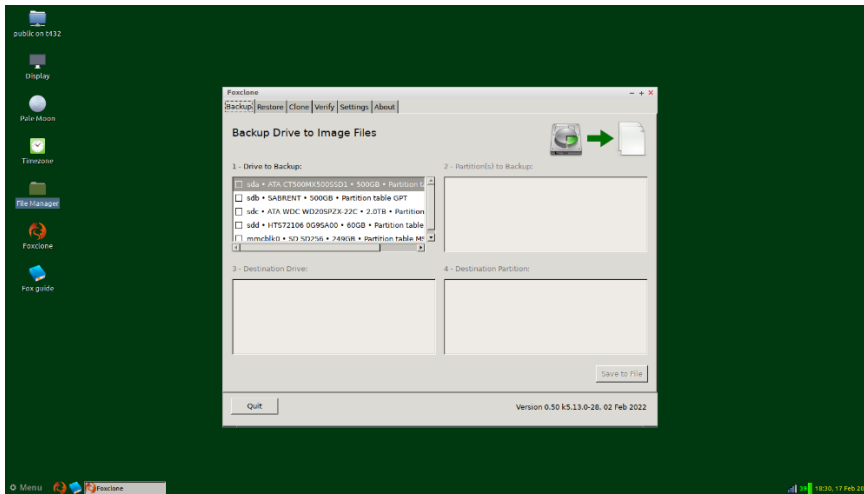
The iso is available in two flavours – the standard version has a 5.4 kernel (built off ubuntu bionic/18.04) and the edge version with a 5.13 kernel (built off ubuntu focal/20.04). If you have issues with the standard version and your hardware is recent, e.g. 10<sup>th</sup> generation intel or newer, then try the edge version.

The latest version of foxclone is available at <https://www.foxclone.com>. Earlier versions can be found in the archive at <https://www.foxclone.org>.

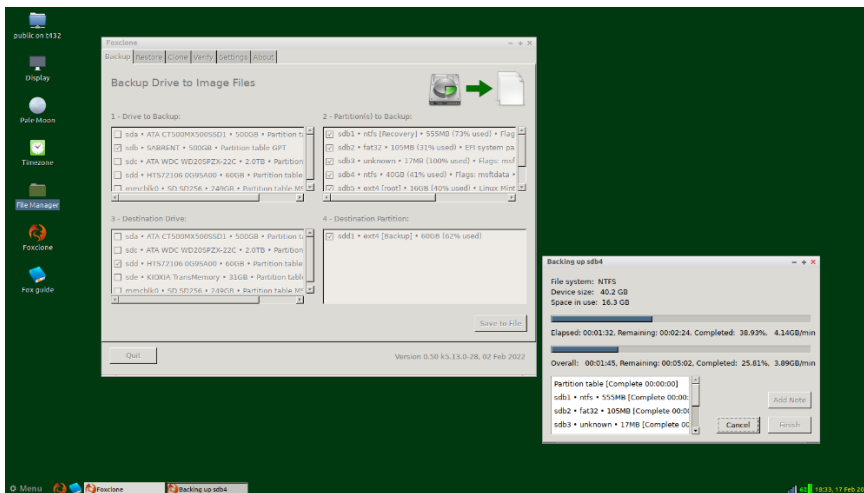


## Screenshots

Main window, default is the backup tab



Running a backup



Changing the font size (16pt).

